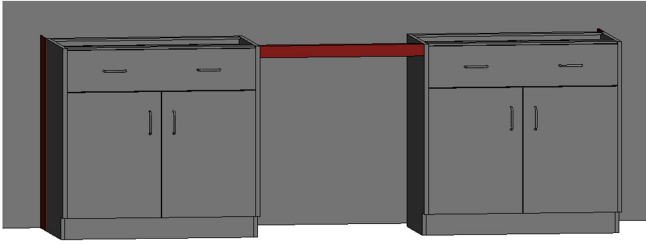


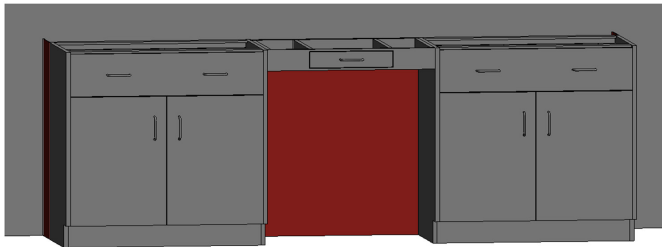
knee space rails and panels

knee space rails

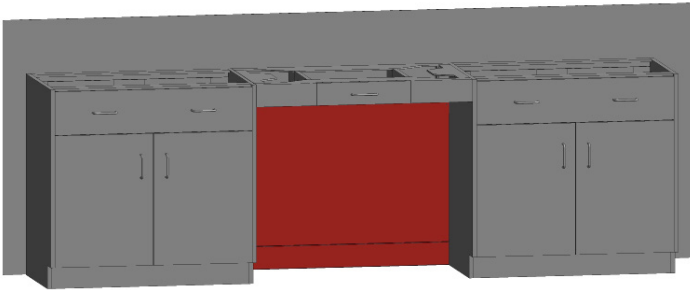


| Item Number |
|-------------|
| SKSR0418 |
| SKSR0424 |
| SKSR0430 |
| SKSR0436 |
| SKSR0442 |
| SKSR0448 |
| SKSR0452 |
| SKSR0454 |
| SKSR0460 |
| SKSR0466 |
| SKSR0472 |
| SKSR0484 |
| SKSR0496 |

knee space panels

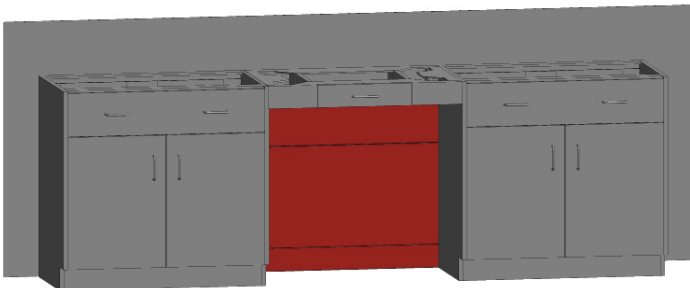


| Item Number | Item Number | Item Number |
|-------------|-------------|-------------|
| SKSP2424 | SKSP2924 | SKSP3524 |
| SKSP2430 | SKSP2930 | SKSP3530 |
| SKSP2436 | SKSP2936 | SKSP3536 |
| SKSP2442 | SKSP2942 | SKSP3542 |
| SKSP2448 | SKSP2948 | SKSP3548 |
| SKSP2454 | SKSP2954 | SKSP3554 |
| SKSP2460 | SKSP2960 | SKSP3560 |
| SKSP2466 | SKSP2966 | SKSP3566 |
| SKSP2472 | SKSP2972 | SKSP3572 |



The suffix "-2P" represents two piece panels.

| Item Number | Item Number | Item Number |
|-------------|-------------|-------------|
| SKSP2424-2P | SKSP2924-2P | SKSP3524-2P |
| SKSP2430-2P | SKSP2930-2P | SKSP3530-2P |
| SKSP2436-2P | SKSP2936-2P | SKSP3536-2P |
| SKSP2442-2P | SKSP2942-2P | SKSP3542-2P |
| SKSP2448-2P | SKSP2948-2P | SKSP3548-2P |
| SKSP2454-2P | SKSP2954-2P | SKSP3554-2P |
| SKSP2460-2P | SKSP2960-2P | SKSP3560-2P |
| SKSP2466-2P | SKSP2966-2P | SKSP3566-2P |
| SKSP2472-2P | SKSP2972-2P | SKSP3572-2P |



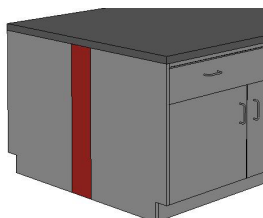
The suffix "-3P" represents three piece panels.

| Item Number | Item Number | Item Number |
|-------------|-------------|-------------|
| SKSP2424-3P | SKSP2924-3P | SKSP3524-3P |
| SKSP2430-3P | SKSP2930-3P | SKSP3530-3P |
| SKSP2436-3P | SKSP2936-3P | SKSP3536-3P |
| SKSP2442-3P | SKSP2942-3P | SKSP3542-3P |
| SKSP2448-3P | SKSP2948-3P | SKSP3548-3P |
| SKSP2454-3P | SKSP2954-3P | SKSP3554-3P |
| SKSP2460-3P | SKSP2960-3P | SKSP3560-3P |
| SKSP2466-3P | SKSP2966-3P | SKSP3566-3P |
| SKSP2472-3P | SKSP2972-3P | SKSP3572-3P |

filler panels

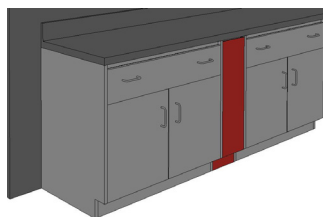
Base cabinet filler panels are available in 29", 32" and 35" high. Floor case filler panels are available in 84" high. They are all available in any width required by entering the dimension in lieu of the "XX" in the part number. Note: AMS base cabinets are 22.375" deep. (Example: SLF35-6.625)

c-filler



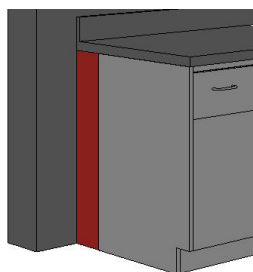
| Item Number | Item Number | Item Number |
|-------------|-------------|-------------|
| SCF29-XX | SCF32-XX | SCF35-XX |

c-front filler



| Item Number | Item Number | Item Number |
|-------------|-------------|-------------|
| SFFC29-XX | SFFC32-XX | SFFC35-XX |

l-filler



| Item Number | Item Number | Item Number |
|-------------|-------------|-------------|
| SLF29-XX | SLF32-XX | SLF35-XX |

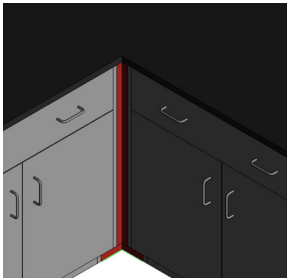
l-front filler



| Item Number | Item Number | Item Number |
|-------------|-------------|-------------|
| SFFL29-XX | SFFL32-XX | SFFL35-XX |

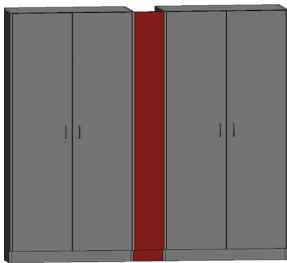
filler panels

corner filler



| Item Number | Item Number | Item Number |
|-------------|-------------|-------------|
| SICF29-XX | SICF32-XX | SICF35-XX |

floor case filler



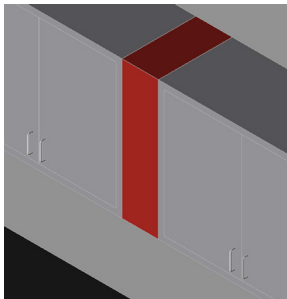
| Item Number |
|-------------|
| SFFL84-XX |

toe space filler



| Item Number |
|-------------|
| STSF-XX |

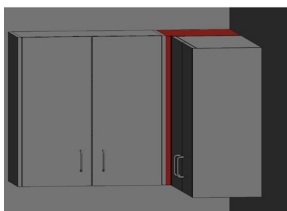
wall case front filler



| Item Number | Item Number | Item Number | Item Number |
|-------------|-------------|-------------|-------------|
| SWCFF24-XX | SWCFF30-XX | SWCFF36-XX | SWCFF48-XX |

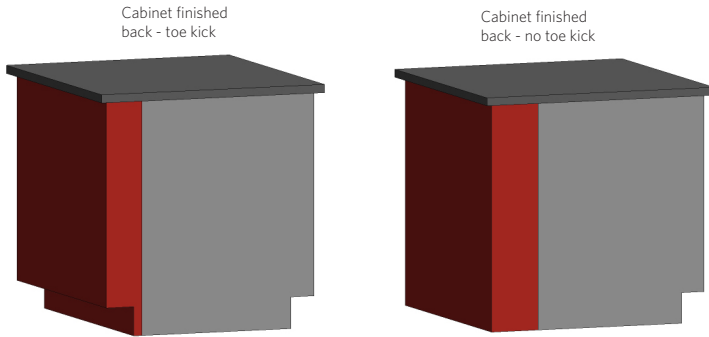
Wall cabinet front filler panels are available in 24", 30", 36" and 48" high. They are all available in any width required by entering the dimension in lieu of the "XX" in the part number. To specify the depth use the suffix "-13" or "-16".

wall case corner filler



| Item Number | Item Number | Item Number | Item Number |
|-------------|-------------|-------------|-------------|
| SWCCF24 | SWCCF30 | SWCCF36 | SWCCF48 |

cabinet finished backs



Cabinet finished backs come standard with a toe kick. Finished backs can be applied to a multitude of cabinets. The example above represents the layout for the part number. The height, width, and depth must match the cabinet that the finished back is to be applied too. If you do not want a toe kick on your unit be sure to put the suffix "NTK" at the end of the part number.

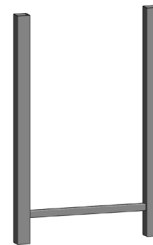
accessories

end pedestals



| Item Number |
|-------------|
| SEP2902-22 |
| SEP2902-28 |
| SEP3502-22 |
| SEP3502-28 |

table legs



| Item Number |
|-------------|
| SL29-22 |
| SL29-28 |
| SL35-22 |
| SL35-28 |

single leg



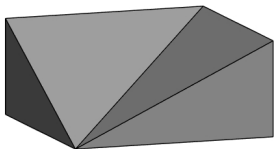
| Item Number |
|-------------|
| SSL-29 |
| SSL-35 |

single leg with plate



| Item Number |
|-------------|
| SSL-29P |
| SSL-35P |

corner sloped top



| Item Number |
|--------------|
| SST-Corner13 |
| SST-Corner16 |
| SST-Corner21 |

sloped top with end caps



| Item Number | Item Number | Item Number |
|-------------|-------------|-------------|
| SST13-18 | SST16-18 | SST21-18 |
| SST13-24 | SST16-24 | SST21-24 |
| SST13-30 | SST16-30 | SST21-30 |
| SST13-36 | SST16-36 | SST21-36 |
| SST13-42 | SST16-42 | SST21-42 |
| SST13-48 | SST16-48 | SST21-48 |

shelves



| Item Number | Item Number | Item Number | Item Number |
|-------------|-------------|-------------|-------------|
| SWS1813 | SWS1816 | SFS1816 | SFS1821 |
| SWS2413 | SWS2416 | SFS2416 | SFS2421 |
| SWS3013 | SWS3016 | SFS3016 | SFS3021 |
| SWS3613 | SWS3616 | SFS3616 | SFS3621 |
| SWS4213 | SWS4216 | SFS4216 | SFS4221 |
| SWS4813 | SWS4816 | SFS4816 | SFS4821 |