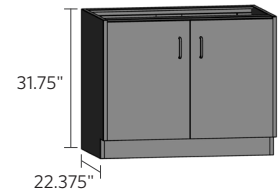


base cabinets — ADA height

ADA height cabinets are 31.75" high and 22.375" deep. Units are available in various widths as shown. Full height door units feature single shelf as standard. Additional shelves are available. Drawer units feature 100 lb. full extension slides as standard. If locks are required, use the suffix "LK".

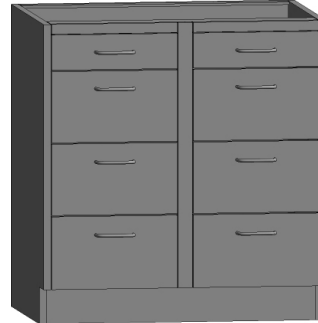


drawer cabinets



12" and wider

Width	Item Number
12"	SB3212-031
15"	SB3215-031
18"	SB3218-031
21"	SB3221-031
24"	SB3224-031
30"	SB3230-031
36"	SB3236-031
42"	SB3242-031
48"	SB3248-031



30" and wider

Width	Item Number
30"	SB3230-062
36"	SB3236-062
42"	SB3242-062
48"	SB3248-062



30" and wider

Width	Item Number
30"	SB3230-210
36"	SB3236-210
42"	SB3242-210
48"	SB3248-210



30" and wider

Width	Item Number
30"	SB3230-202
36"	SB3236-202
42"	SB3242-202
48"	SB3248-202

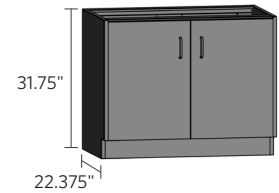


30" and wider

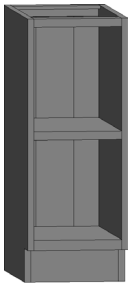
Width	Item Number
30"	SB3230-220
36"	SB3236-220
42"	SB3242-220
48"	SB3248-220

base cabinets — ADA height

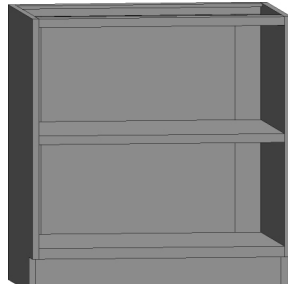
ADA height cabinets are 31.75" high and 22.375" deep. Units are available in various widths as shown. Door units feature single shelf as standard. Additional shelves are available. Specify left- or right-hinged doors using the suffix "L" or "R". If locks are required, use the suffix "LK".



open cabinets



Up to 24" wide



30" and wider

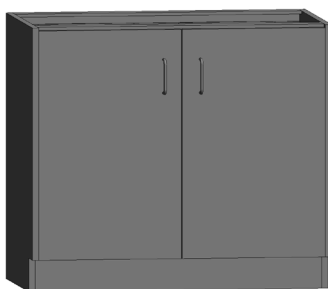
Width	Item Number
12"	SB3212-000
15"	SB3215-000
18"	SB3218-000
24"	SB3224-000
30"	SB3230-000
36"	SB3236-000
42"	SB3242-000
48"	SB3248-000

door cabinets



Right-hinged door shown

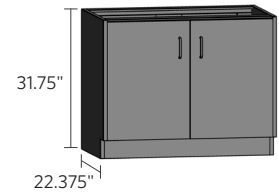
Width	Left hinged	Right hinged
12"	SB3212-100-L	SB3212-100-R
15"	SB3215-100-L	SB3215-100-R
18"	SB3218-100-L	SB3218-100-R
24"	SB3224-100-L	SB3224-100-R



Width	Item Number
30"	SB3230-200
36"	SB3236-200
42"	SB3242-200
48"	SB3248-200

base cabinets — ADA height

ADA height cabinets are 31.75" high and 22.375" deep. Units are available in various widths as shown. Drawer units feature 100 lb. full extension slides as standard. If locks are required, use the suffix "LK".



drawer cabinets



Up to 24" wide



30" and wider

Width	Item Number
12"	SB3212-030
15"	SB3215-030
18"	SB3218-030
24"	SB3224-030
30"	SB3230-030
36"	SB3236-030
42"	SB3242-030
48"	SB3248-030



Up to 24" wide



30" and wider

Width	Item Number
12"	SB3212-040
15"	SB3215-040
18"	SB3218-040
24"	SB3224-040
30"	SB3230-040
36"	SB3236-040
42"	SB3242-040
48"	SB3248-040



Up to 24" wide



30" and wider

Width	Item Number
12"	SB3212-020-1F
15"	SB3215-020-1F
18"	SB3218-020-1F
24"	SB3224-020-1F
30"	SB3230-040-2F
36"	SB3236-040-2F
42"	SB3242-040-2F
48"	SB3248-040-2F



Up to 24" wide

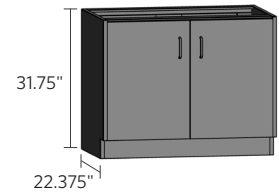


30" and wider

Width	Item Number
15"	SB3215-012-1F
18"	SB3218-012-1F
24"	SB3224-012-1F
30"	SB3230-024-2F
36"	SB3236-024-2F
42"	SB3242-024-2F
48"	SB3248-024-2F

base cabinets — ADA height

ADA height cabinets are 31.75" high and 22.375" deep. Units are available in various widths as shown. Drawer units feature 100 lb. full extension slides as standard. Full height door units feature single shelf as standard. Additional shelves are available. Specify left- or right-hinged doors using the suffix "L" or "R". If locks are required, use the suffix "LK".



drawer cabinets



Width	Item Number
30"	SB3230-080
36"	SB3236-080
42"	SB3242-080
48"	SB3248-080



Width	Item Number
30"	SB3230-060
36"	SB3236-060
42"	SB3242-060
48"	SB3248-060



Width	Item Number
30"	SB3230-064
36"	SB3236-064
42"	SB3242-064
48"	SB3248-064

door/drawer cabinets

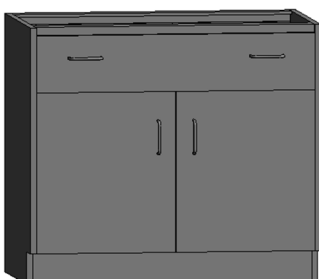


Width	Left hinged	Right hinged
12"	SB3212-110-L	SB3212-110-R
15"	SB3215-110-L	SB3215-110-R
18"	SB3218-110-L	SB3218-110-R
24"	SB3224-110-L	SB3224-110-R

Right-hinged door shown



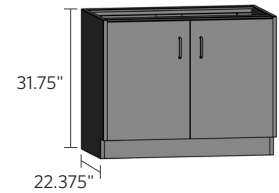
Width	Item Number
30"	SB3230-202-A
36"	SB3236-202-A
42"	SB3242-202-A
48"	SB3248-202-A



Width	Item Number
30"	SB3230-210
36"	SB3236-210
42"	SB3242-210
48"	SB3248-210

base cabinets — ADA height

ADA height cabinets are 31.75" high and 22.375" deep. Units are available in various widths as shown. Drawer units feature 100 lb. full extension slides as standard. Door units feature single shelf as standard. Additional shelves are available. Specify left- or right-hinged doors using the suffix "L" or "R". If locks are required, use the suffix "LK".



door/drawer cabinets



Right-hinged door shown

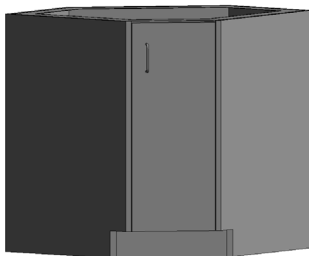
Width	Left hinged	Right hinged
30"	SB3230-142-AL	SB3230-142-AR
36"	SB3236-142-AL	SB3236-142-AR
42"	SB3242-142-AL	SB3242-142-AR
48"	SB3248-142-AL	SB3248-142-AR



Right-hinged door shown

Width	Left hinged	Right hinged
30"	SB3230-150-L	SB3230-150-R
36"	SB3236-150-L	SB3236-150-R
42"	SB3242-150-L	SB3242-150-R
48"	SB3248-150-L	SB3248-150-R

corner cabinets

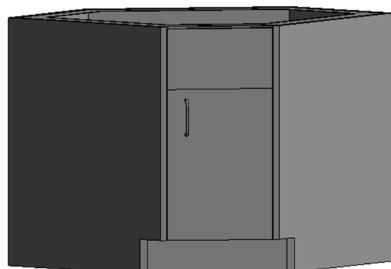


Right-hinged door shown

Left hinged	Right hinged
SC3214-100-L-LS	SC3214-100-R-LS

Lazy Susan Add-On Suffix
"LS"

Left hinged	Right hinged
SC3214-100-L	SC3214-100-R



Right-hinged door shown

Left hinged	Right hinged
SC3214-100-SL-LS	SC3214-100-SR-LS

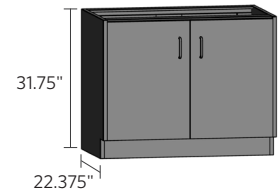
Lazy Susan Add-On Suffix
"LS"

Left hinged	Right hinged
SC3214-100-SL	SC3214-100-SR

Left hinged with louvers	Right hinged with louvers
SC3214-100-SVL	SC3214-100-SVR

base cabinets — ADA height

ADA height cabinets are 31.75" high and 22.375" deep. Units are available in various widths as shown. Full height door units feature single shelf as standard. Additional shelves are available. Specify left- or right-hinged doors using the suffix "L" or "R". If locks are required, use the suffix "LK".

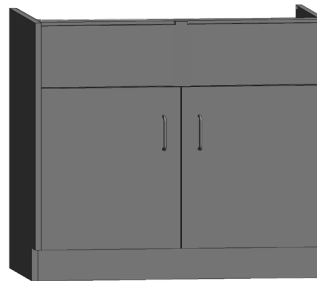


sink & fume hood cabinets



Width	Left hinged	Right hinged
12"	SB3212-100-SL	SB3212-100-SR
15"	SB3215-100-SL	SB3215-100-SR
18"	SB3218-100-SL	SB3218-100-SR
24"	SB3224-100-SL	SB3224-100-SR

Right-hinged door shown

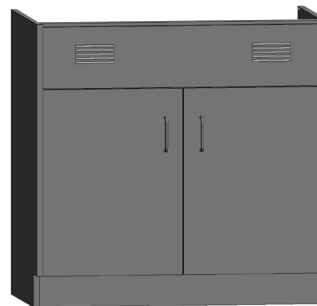


Width	Item Number
30"	SB3230-200-S
36"	SB3236-200-S
42"	SB3242-200-S
48"	SB3248-200-S
52"	SB3252-200-S
58"	SB3258-200-S

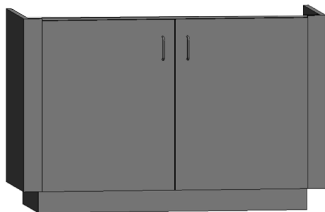


Width	Left hinged with louvers	Right hinged with louvers
12"	SB3212-100-SVL	SB3212-100-SVR
15"	SB3215-100-SVL	SB3215-100-SVR
18"	SB3218-100-SVL	SB3218-100-SVR
24"	SB3224-100-SVL	SB3224-100-SVR

Left-hinged door shown



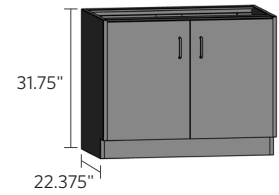
Width	Item Number (with louvers)
30"	SB3230-200-SV
36"	SB3236-200-SV
42"	SB3242-200-SV
48"	SB3248-200-SV
52"	SB3252-200-SV
58"	SB3258-200-SV



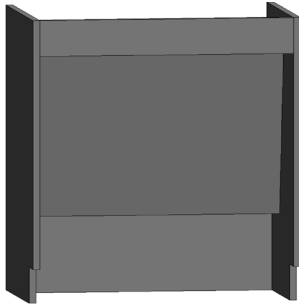
Width	Item Number
52"	SB3252-200-SI
58"	SB3258-200-SI

base cabinets — ADA height

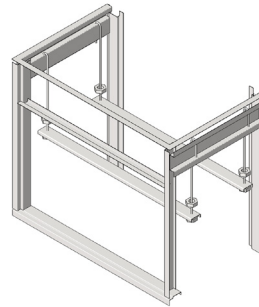
ADA height cabinets are 31.75" high and 22.375" deep. Units are available in various widths as shown. Drawer units feature 100 lb. full extension slides as standard. Door units feature single shelf as standard. Additional shelves are available. Specify left- or right-hinged doors using the suffix "L" or "R". If locks are required, use the suffix "LK".



sink & fume hood cabinets

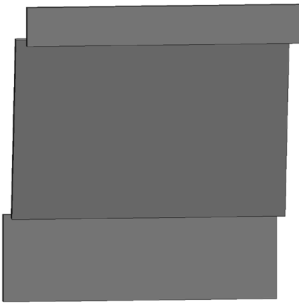


Width	Item Number
30"	SADAKSC30
36"	SADAKSC36
42"	SADAKSC42
48"	SADAKSC48

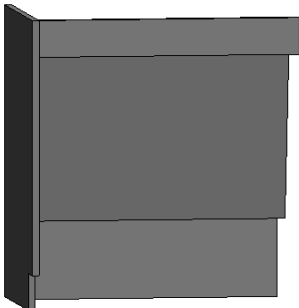


Sink Support Assembly

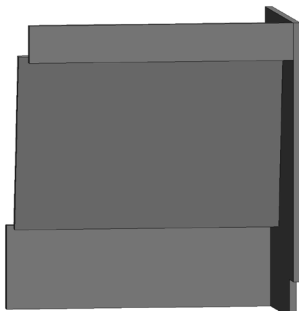
Item Number
SS-C14
SS-18
SS-24
SS-30
SS-36
SS-42
SS-48
SS-52
SS-58



Width	Item Number
30"	SADAKSP30
36"	SADAKSP36
42"	SADAKSP42
48"	SADAKSP48



Width	Item Number
30"	SADAKSCL30
36"	SADAKSCL36
42"	SADAKSCL42
48"	SADAKSCL48



Width	Item Number
30"	SADAKSCR30
36"	SADAKSCR36
42"	SADAKSCR42
48"	SADAKSCR48